

2.1 Labour Force Composition(a)(b)

	1996 no.	2001 no.
Employed		
Males		
Full-time(c)	521	636
Part-time	164	236
Total(d)	707	907
Females		
Full-time(c)	222	274
Part-time	249	358
Total(d)	490	657
Total employed	1197	1564
Unemployed		
Males	129	93
Females	45	46
Total	174	139
Total labour force	1371	1703
Labour force participation rate (%)	54.3	55.0
Total not in labour force	1062	1213

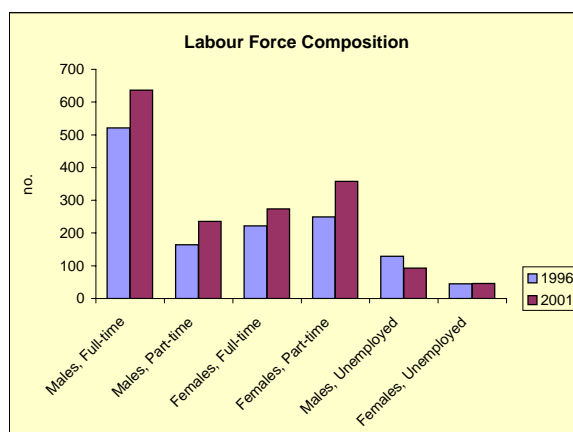
(a) Census place of usual residence counts.

(b) Persons aged 15 years and over.

(c) Full-time is defined as having worked 35 hours or more in all j (d) Includes not-stated.

- during the week prior to Census night.

Source: Census of Population and Housing, ABS.

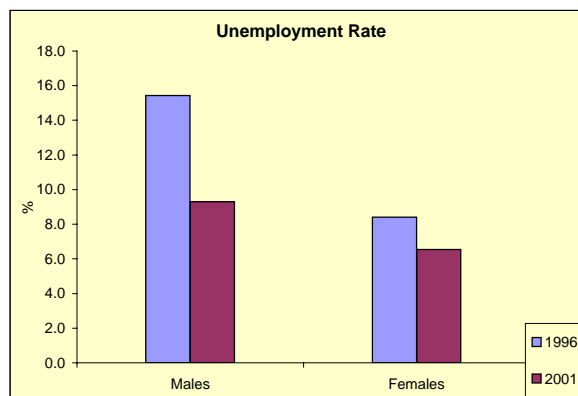


2.2 Unemployment Rates(a)

	1996 %	2001 %
Males		
15 - 19	26.8	8.3
20 - 24	16.4	10.2
25 - 44	15.4	11.4
45 +	13.9	7.5
Total	15.4	9.3
Females		
15 - 19	21.4	18.4
20 - 24	7.9	8.1
25 - 44	8.4	7.1
45 +	6.6	4.3
Total	8.4	6.5

(a) Census place of usual residence counts.

Source: Census of Population and Housing, ABS.



2.3 Hours Worked(a)(b)(c)

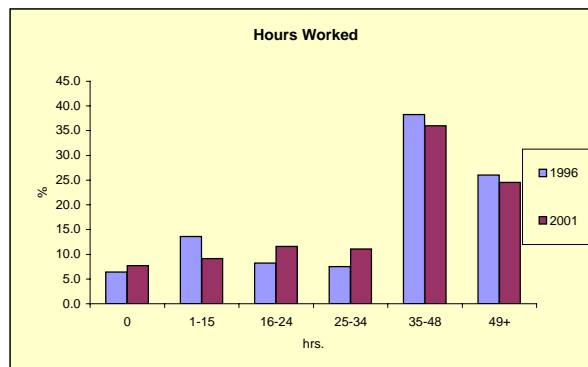
Hours Worked	1996 no.	2001 no.
0	74	116
1-15	157	137
16-24	95	174
25-34	87	167
35-48	442	541
49+	301	369

(a) Census place of usual residence counts.

(b) Based on hours worked in the week before Census night.

(c) Employed persons only.

Source: Census of Population and Housing, ABS.



2.4 Employed Persons, by Occupation(a)

Occupations	1996 no.	2001 no.
Managers and administrators	277	329
Professionals	100	116
Associate professionals	132	141
Tradespersons	149	223
Advanced clerical	36	48
Intermediate clerical	94	154
Intermediate production	136	160
Elementary clerical	48	84
Labourers	182	263
Inadequately described	12	14
Not stated	31	32
Total	1197	1564

(a) Census place of usual residence counts.

Source: Census of Population and Housing, ABS.

