



Sponsorship Invitation

EARLY RATES INCENTIVE SCHEME 2025

The Shire of Gingin is inviting local businesses to become special prize sponsors for our annual Early Rates Incentive Scheme - a popular initiative that encourages early payment of rates so we can deliver key projects and services to the community sooner.

By sponsoring a prize, your business will not only be helping us reward 10 lucky early ratepayers with exciting prize packages (made up of cash, vouchers, or services), but you'll also receive valuable promotion across our platforms and networks.

Here's what your business will gain:

- Promotion to over 7,000 Facebook followers, with an average monthly reach of 25,000+ users and 10,000+ engagements (likes, comments, shares, clicks).
- Exposure via our LinkedIn and Instagram accounts (combined following nearing 500) with steady engagement.
- Featured publicity in four regional newspapers, reaching communities throughout the Shire of Gingin and surrounding areas including Bullsbrook, Bindoon, Chittering, Dandaragan, Jurien Bay, Moora, and Wongan Hills.

We offer sponsorship packages to suit a range of budgets, with four flexible tiers available. It's a fantastic way to support your community, increase your brand visibility, and be associated with a well-loved local initiative.

The following page outlines the sponsorship levels and the benefits included at each tier.

*Highlighting
Local Produce
in the Shire of
Gingin*



SPONSORSHIP LEVELS



Liquor

UNLIMITED SPONSORSHIP
AVAILABLE \$550

Recognition on Shire social media and website.

Recognition in the Shire's Budget Bulletin mailed to every rateable property in August (please note: we can only offer this if sponsorship is received by 18 July).

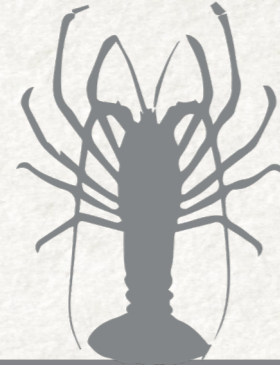
Promotion of your business logo in one edition of the Shire's Country & Coast newsletter advertised in 4 regional papers, via subscriber e-newsletter, and on social media.

Your company logo displayed on a special 'thank you' wall in the Shire Administration Centre for 12 months.

Invitation to the Early Rates Prize Night in November, with an opportunity to speak on the night.

DID YOU KNOW?

The predominant clone of Chardonnay grown in Margaret River today is known as the 'Gingin' clone. The origin of the name is that first large plantings were made in the Shire of Gingin.



Seafood

UNLIMITED SPONSORSHIP
AVAILABLE \$1,100

Recognition on Shire social media and website.

Recognition in the Shire's Budget Bulletin mailed to every rateable property in August (please note: we can only offer this if sponsorship is received by 18 July).

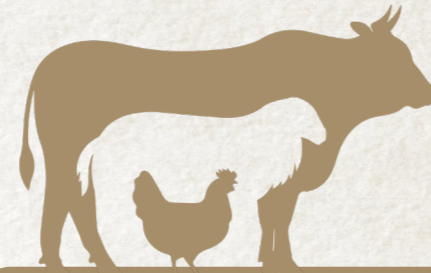
Advertorial up to 50 words in one edition of the Shire's Country & Coast newsletter advertised in 4 regional papers, via subscriber e-newsletter, and on social media.

Your company logo displayed on a special 'thank you' wall in the Shire Administration Centre for 12 months.

Invitation to the Early Rates Prize Night in November, with an opportunity to speak on the night.

DID YOU KNOW?

Lancelin had a Gross Town Product of \$56 million in 2020-21, with the western rock lobster industry accounting for approximately \$18.5 million (33 per cent) of this value.



Meat & Dairy

UNLIMITED SPONSORSHIP
AVAILABLE \$2,200

Recognition on Shire social media and website.

Recognition in the Shire's Budget Bulletin mailed to every rateable property in August (please note: we can only offer this if sponsorship is received by 18 July).

Advertorial up to 100 words in one edition of the Shire's Country & Coast newsletter advertised in 4 regional papers, via subscriber e-newsletter, and on social media.

Your company logo displayed on a special 'thank you' wall in the Shire Administration Centre for 12 months.

Invitation to the Early Rates Prize Night in November, with an opportunity to speak on the night.

DID YOU KNOW?

The Wheatbelt is Western Australia's most significant farming region for livestock disposals (meat) and products (wool, eggs and milk), representing over 36% of WA's livestock value. The Shire of Gingin is well situated as a prominent supplier to international markets due to its close proximity to Perth, easy access to Fremantle and Geraldton ports, key transport routes, climate suitability and significant groundwater resources.



Fruit & Veg

UNLIMITED SPONSORSHIP
AVAILABLE \$4,400

Recognition on Shire social media and website.

Recognition in the Shire's Budget Bulletin mailed to every rateable property in August (please note: we can only offer this if sponsorship is received by 18 July).

Advertorial up to 100 words in 2 editions of the Shire's Country & Coast newsletter advertised in 4 regional papers, via subscriber e-newsletter, and on social media.

Your company logo prominently displayed on a special 'thank you' wall in the Shire Administration Centre for 12 months.

Invitation to the Early Rates Prize Night in November, with an opportunity to speak and co-present the major prize with the Shire President.

DID YOU KNOW?

The Shires of Gingin, Chittering and Dandargan produce more fresh fruit and vegetable than anywhere else in WA. Collectively we produce:

- 83% of WA's oranges
- 80% of WA's lemons
- 64% of WA's blueberries
- 60% of WA's lettuce
- 51% of WA's cauliflower
- 41% of WA's mangoes

SPONSORSHIP ACCEPTANCE FORM

SPONSOR BUSINESS:

CONTACT NAME:

CONTACT PHONE NUMBER:

EMAIL ADDRESS:

POSTAL ADDRESS:

Fruit & Veg

CASH / SERVICES / VOUCHERS (please circle)

UNLIMITED SPONSORSHIP AVAILABLE
\$4,400

Meat & Dairy

CASH / SERVICES / VOUCHERS (please circle)

UNLIMITED SPONSORSHIP AVAILABLE
\$2,200

Seafood

CASH / SERVICES / VOUCHERS (please circle)

UNLIMITED SPONSORSHIP AVAILABLE
\$1,100

Liquor

CASH / SERVICES / VOUCHERS (please circle)

UNLIMITED SPONSORSHIP AVAILABLE
\$550

If offering goods/services/vouchers, please specify:

The Shire sincerely thanks you for your generous sponsorship

Please see overleaf for payment details.

PAYMENT DETAILS

Please email this completed acceptance form and a current high resolution copy of your company logo (for use on promotional material) to rates@gingin.wa.gov.au.

Once payment has been received then a tax invoice will be forwarded to you for your tax records.

Further enquiries may be directed to the Shire of Gingin Rates Department on 9575 5126 (Melinda Kingston / Aundreau Cain).

- Cheque Attached
- Credit Card by phone: contact the Shire of Gingin Rates Department on 9575 5126
- Receipt Number
- Credit/Debit Card (please complete payment below)

CARD HOLDER NAME:

CARD NUMBER:

CCV:

EXPIRY:

AMOUNT:

OFFICE USE ONLY

TOTAL AMOUNT PAID:

RECEIPT NO:

CREDITOR NO:

DATE PROCESSED:

AUTHORISING OFFICER:

