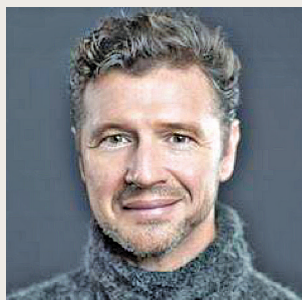


# COUNCIL TO COMMUNITY

# AUGUST

## What's on in... August

### Alzheimer's WA Hosting Free Community Event in Lancelin



Alzheimer's WA is pleased to bring to you internationally renowned speaker and expert on communicating with people living with dementia, **Michael Verde**.

Michael is the founder and president of Memory Bridge which has connected over 8,000 people with and without dementia to each other in one-to-one relationships.

Michael is an entertaining story teller and engaging speaker who is coming to Lancelin to speak on community connection for people living with dementia – and helping our towns become dementia friendly communities.

If dementia is an issue for you or your loved ones then don't miss this unique free event – just turn up on the day.

**When:** Monday 7 August at 11.00am  
**Where:** Lancelin Community Sporting Club  
**Price:** FREE

If you have any queries please contact the Dementia Friendly Community team on 9388 2800 or email [WA.DFC@alzheimers.org.au](mailto:WA.DFC@alzheimers.org.au).

## Our Community News

### Gingin DHS Crosswalk Gets Makeover

The crosswalk at Gingin District High School has had a 'makeover' - the existing line marking has been refreshed and further line-marking added, as well as an upgrade of signage, which have been done to make it clearer and safer for children crossing the road, and to highlight the safety requirements around the school for people and parents travelling through the area.

"We need to remind the community that this is a 40km/hr zone during school times," said Executive Manager Operations-Construction, Allister Butcher. "The pedestrian crossing is operational 24/7 which means the road safety rules apply both to pedestrians and motorists at all times - not obeying the road rules under the Traffic Act can result in up to \$300 fine and between 3-4 demerit points for motorists. So please slow down around our schools."

The signs were installed by the Shire and CVC Linemarking refreshed the lines.



### Verge Maintenance

The Shire will be commencing verge slashing in rural residential areas shortly however, we need to remind our community the focus of slashing road verges is that of **road user safety** rather than aesthetics. The Shire will endeavor (as much as is practical) to slash the verge two runs on each side of the road and if resources (and budget) permit will slash to the fence line where practical.

If additional mowing is required to improve appearance of properties, it would be the landowners' responsibility to complete this.

## Our Community News

### New Two-Bin Waste Service is on its way

The Shire is pleased to announce it will be rolling out a new two-bin waste service to residents currently receiving waste collection in August and September. Our waste management contractor, Avon Waste, will supply the new bins and manage emptying of the new two-bin system. The service will include a **red lid** bin for general waste (weekly) and a **yellow lid** bin for recyclables (fortnightly).

At this stage, the new bins will be delivered to households from 21 – 31 August, with collections commencing on 1 September, depending on each Zone. These are as follows:

- **Zone 1** – Lancelin
- **Zone 2** – Ledge Point
- **Zone 3** – Gingin and properties east of Brand Highway including Lennard Brook
- **Zone 4** – Seabird, Guilderton, Gingin Brook Road and properties west of Brand Highway currently receiving waste collection (including Beermullah, Wanerie, Coonabidgee, Muckenburra, Neergabby and Yeal) but *excluding* the Rural Estates listed below
- **Zone 5** – Ocean Farms, Seaview Park, Sovereign Hill, Redfield Park, and Woodridge

The Shire will be writing to those ratepayers shortly whose properties currently receive waste collection with more information on the new service.

### Pay Your Rates Early and Win!

Yes it's that time of year again and the Shire is once again offering all our ratepayers the opportunity to win one of **10 exciting prize packages** worth a total **\$19,000!** This year, if you pay your rates in full by **13 September** you will automatically be entered into the prize draw.

Last year's major prize winner **Anthony Aristei** – who was represented by his brother Marco (photo below) - took home the Bendigo Bank prize package valued at \$5,000 – it included a cash account, an overseas holiday and plenty of spending money.



More details on the Early Rates Incentive Scheme will be published in the Shire's Budget Bulletin included with the rate notices due to be mailed out this month.

### How Well is Your Property Numbered?

In the event of an **emergency**, how easily would an ambulance, police officer or fire brigade be able to **find you**? The Shire is urging residents to assess how well homes and properties are numbered, as there are still many with ambiguous identification.

The Shire is able to assist with reflective numbering and placement, provide any other advice, and ensure that updated information is registered with Landgate and any other mapping systems used by emergency services. Other benefits of good property ID is the accurate delivery of mail and making your property easier for other parties to find (veterinarians, stock officers, businesses, family and friends).

To find out more contact the Shire on 9575 2211 or mail@gingin.wa.gov.au.



## Our Community News

### Events coming up... save the dates!

- 'Switzerland' live broadcast – Gingin Golf Club – Friday 1 September
- Jude Scott Watercolour Weekend Workshop – Guilderton Community Hall – 2-3 September
- Spring Community Markets – Gingin Railway Station – Sunday 3 September

See the Shire's 'Events Calendar' for full details of these events.

## Business in Focus

### Business in Focus – proudly supporting the Shire's Early Rates Incentive Scheme



Avon Waste has been operating successfully throughout Western Australia in the waste management arena for **30 years**. We bring together expertise in managing operations

across a wide geographic area, servicing local and state governments, as well as the commercial and industrial sectors across Western Australia.

We currently offer a range of front lift skip bins in Gingin and surrounding areas - front lift bins are the ideal solution for personal or business customers that require the next level waste management solution.

If you are looking for an easy way to dispose extra general waste then a front lift skip may be what you are looking for. They are available in three sizes: 1.5m<sup>3</sup> (6 wheelie bin capacity), 3.0m<sup>3</sup> (12 wheelie bin capacity) and 4.5m<sup>3</sup> (19 wheelie bin capacity).

Avon Waste has recently acquired a **new depot facility** located on Hoy Road, **Coonabidgee**. This facility will see more local employment opportunities in the area and a greater service offering to the region. We are excited to be a part of the Gingin community and look forward to assisting with your waste management requirements.

So if you are looking for a simple solution to waste management contact our office and speak to our sales manager **Mark Palumbo** on 9641 1318 and he will be more than happy to discuss what service Avon Waste can offer.

## Shire Notices

### Call for Nominations – Community Representatives

Ratepayers and residents of the Shire of Gingin are invited to nominate for **two vacant** community representative positions on the **Gingin Water Advisory Committee**.

This is a new committee (established at the Council meeting on 18 July 2017) which will advise Council and the Shire of Gingin community on matters relevant to understanding and protecting the water resource of the Shire.

A Nomination Form and Selection Criteria, the Committee's Terms of Reference, and the Shire's Code of Conduct for Councillors, Committee Members and Employees can be downloaded from 'Your Say & Public Notices' page on our website [www.gingin.wa.gov.au](http://www.gingin.wa.gov.au).

If you are interested in water resource issues and feel that you can contribute to your community in this arena, then we encourage you to submit a completed nomination by the **closing date of 31 August 2017**.

Any enquiries can be directed to the Shire's Chief Executive Officer (Jeremy Edwards) or Executive Manager Planning and Development (Lisa Edwards) on (08) 9575 2211 or by email to [mail@gingin.wa.gov.au](mailto:mail@gingin.wa.gov.au).