

COUNCIL TO COMMUNITY

June

This edition of the Shire of Gingin's 'Council to Community' is brought to you by:

CU@PARK

(08) 9575 1338

www.facebook.com/cu.at.park.gingin/

"The secret's out on this hidden gem! CU@Park is a small cafe/restaurant situated in Gingin with a gift shop full of treasures. Pop in for a hearty meal, coffee and cake or a drink by the fire – all next to the beautiful Granville Park."

Thank you to CU@Park for sponsoring the 2019 Rates Incentive Prize Night.

Our Community News

Donation to Volunteer Fire Brigades



At Council's meeting on Tuesday, 19 May, a very special presentation was conducted.

Three members of the Lions Club of Whitford attended to make a donation of \$3,391.10 to the Volunteer Fire Brigades of the Shire of Gingin. The donation was presented by Mr Philip Couper, the President of the Lions Club and he was supported by fellow Lions members, Mr Jack LeCras OAM and Mr Greg Wilson.

This donation was made to the Fire Brigades of our Shire after a very successful fundraiser that the Lions Club conducted in February earlier this year following the Yanchep Bush Fire which threatened over 6,000 homes from Yanchep in the City of Wanneroo through to Woodridge and Guilderton in the Shire of Gingin. This fundraiser was ably supported by the Department of Fire and Emergency Services (DFES), in particular Commissioner Darren Klemm AFSM and Superintendent Andrew Hinton.

"On behalf of the northern suburbs, the City of Joondalup and Lions Clubs of Whitford, we would like to express our sincerest gratitude to all of your volunteers and the work they do on behalf of our community," said Mr Couper at Council's Tuesday meeting.

The Shire President, Cr Wayne Fewster, accepted the donation on behalf of the Shire and the Volunteer Fire Brigades.

The Yanchep Bush Fire directly threatened the Shire's southern communities (particularly Woodridge and Guilderton) from the 13 – 16 December where an Emergency Level (red alert) warning was in place for the area before being downgraded to a Watch & Act Level (yellow alert) late in the day on the 16th.

A purpose for the expenditure of the funds is yet to be determined however Phil Barrett, the Shire's Chief Bush Fire Control Officer, is more than certain that an excellent purpose to expend this generous donation will easily be found.

The Shire of Gingin once again sincerely thanks the Lions Club of Whitford for their generous support. Our volunteers are vital during emergencies and this donation will go a long way towards supporting our Fire Brigades to keep delivering their services to a high standard to our communities in times of crisis.

Coastal Erosion

The weather on 24-25 May saw severe wind gusts blast our coastline once more. Initial inspections of our coastal communities have revealed some damage, particularly in Lancelin, but ultimately our coastline fared relatively well under the onslaught.

This was in large part due to sand re-nourishment undertaken at Grace Darling Park by the Shire in December 2019 in addition to the recent dredging works by the Department of Transport in the same area. Sand re-nourishment installs a gentler slope leading up

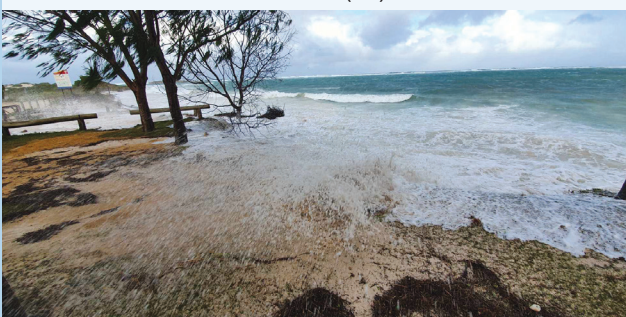
Our Community News

the beach when undertaken and consequently, the waves expend much of their energy by breaking further out as opposed to against the shoreline. Although a short term strategy, this method is relatively inexpensive and grants the Shire time to continue ongoing discussions with the State Government in addition to further research into a more long term solution.

Dredging works will continue in Lancelin into early June with approximately 5,000m³ of sand already deposited. The dredging contractors will continue to renourish between Hopkins St and the toilet block at Grace Darling Park and then into the Edward Island track area if time and resources permit.

Other erosion issues after the recent weather includes identification of breach points via an access track adjacent to the Caravan Park, at the end of Hopkins St and beach access points at Ledge Point. The Shire will investigate to address this issue. Erosion of approximately 10m also occurred at Hinchcliffe Point and at Ledge Point for the entire length of the beach. The seawall in Seabird held up relatively well with only some minor erosion occurring off the North end.

Coastal erosion, as the Shire has previously stated, is a complex issue involving many facets. However, the Shire will endeavour to keep the community informed on this matter and to continue working hard to develop a long term strategy for implementation. Community members who have any queries about this process may contact the Shire for further information on (08) 9575 5100.



Plan to "Burn Smart" to Protect your Property and Community

The Department of Fire & Emergency Services (DFES) has produced a new guide which aims to give private landholders the tools to plan and **Burn SMART** on their properties so as to dramatically reduce the number of escaped burns that threaten the community. This guide is timely given the Unrestricted Burning Period commenced Monday, 1 June for the Shire of Gingin.

Every year thousands of burns are successfully undertaken on private properties, however a small number escape. Nearly 75 percent of all escaped burns in Western Australia over the past three years started on private properties.

The Shire of Gingin has in recent years been working hard to conduct extensive amounts of mitigation work (clearing, spraying, burning, etc.) throughout the district and many property owners wish to do the same, especially given last summer's bushfires experienced both in our own Shire and also in the eastern states. This guide will provide community members with a comprehensive understanding about how to conduct a burn safely on your property and how to make sure you retain control of it.

Planned burning is vital to reduce the risk of bush fires and unfortunately inexperienced property owners are often unaware of the personal responsibility that comes with lighting and extinguishing a fire.

Our Community News

Burn SMART is the first public resource created by the Bushfire Centre of Excellence, which harnesses and shares valuable bushfire knowledge and experience that will benefit the community.

Before conducting any planned burn, property owners should contact the Shire to confirm if any burning restrictions may apply to your area. It is also up to the property owners to confirm that there is not a Total Fire Ban (applied by DFES) or any other sort of ban in place. A ban can be placed at any time of the year (even in the Unrestricted Burning Period although this is rare) and it is the **PROPERTY OWNER'S RESPONSIBILITY** to check that there is not a ban in place prior to lighting any burn. Lighting a fire during a Total Fire Ban can result in the issuing of an infringement (\$1,000) with a maximum penalty of \$25,000 or 1 year's imprisonment.

To view and download **Burn SMART** resources visit www.dfes.wa.gov.au/plannedburning.

Undertaking any burn should be done with caution and these new resources from DFES are an excellent tool for community members to utilise.

Open Again for Business

Restrictions are being eased in WA as we've all heard in recent days. The following Shire facilities and services have now reopened/being continued, albeit with some social distancing measures still in place.

- **Front desk (Gingin Administration Centre and Lancelin Office)** – reopened with social distancing measures in place.
- **Libraries (Gingin & Lancelin)** – reopened with social distancing measures in place.
- **Lancelin Off-road Vehicle Area** – reopened.
- **Granville Centre** – available for hire. Maximum capacities and cleaning procedures apply.
- **Council Meetings** – reopened to the Public up to a maximum of 5 people. Please contact the Shire's Governance team in advance to register your interest if you wish to attend – (08) 9575 5138. If you are intending to stay for the whole meeting, please be aware that you may be asked to leave the Council Chamber from time to time to permit the attendance of others. The public is still requested to submit any questions for Public Question Time in writing in advance and if you wish to present a delegation, the normal process applies. Refer to the Shire's website (www.gingin.wa.gov.au) for further information on how to do either of these processes.

Some services/facilities still remain unavailable to the public for the time being or will be reopened shortly. Namely this includes:

- **Skate Parks & Playgrounds** – to be reopened from Saturday, 6 June.
- **Community Bus & Sound Shell** – bookings remain unavailable for the time being.

*Note - this article may be out of date by the time it is published. Please visit the Shire's website for the latest updates.

Save the Dates!

- **16 June – Ordinary Council Meeting at 3pm, Shire Administration Centre, Gingin** – physical attendance at Council meetings by members of the public is now allowed again up to a maximum of 5 people. Please register your interest in attending by contacting the Shire's Governance team on (08) 9575 5127. If you wish to present a delegation or submit a question for Public Question Time, please refer to the Shire's website (www.gingin.wa.gov.au) for the process to do this in advance of the meeting.