

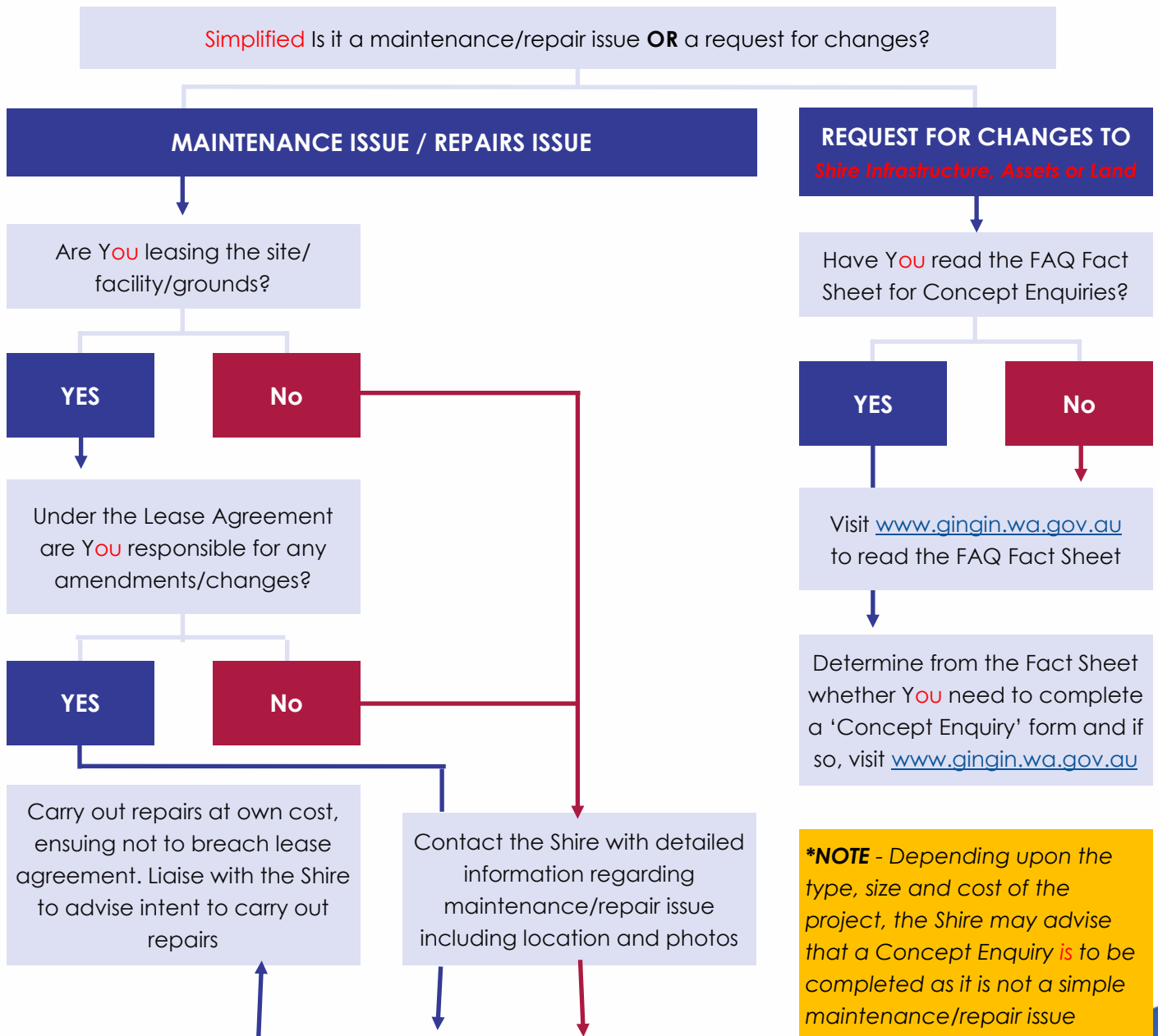
Simplified MAKING CHANGES TO SHIRE ASSETS, INFRASTRUCTURE OR LAND

**Notes for reference*

'Shire Infrastructure, Assets or Land': is inclusive of those owned, managed, or a responsibility of the Shire

'Changes': Includes amending, upgrades, additions to and new Shire Infrastructure, Assets or Land

'You': refers to the Community Group/Club, Community Member or Stakeholder, etc.



E: mail@gingin.wa.gov.au, Subject line: 'Maintenance Request'
T: (08) 9575 5100

